



**CLASSIC  
NEW ZEALAND  
WINE  
TRAIL**



*Unforgettable wine and food experiences around every corner*

## **Classic New Zealand Wine Trail events during Rugby World Cup 2011**

*Throughout September and October 2011, the Classic New Zealand Wine Trail will be in festival mode.*

*The Classic New Zealand Wine Trail serves up unforgettable wine and food experiences along the signposted 380km (240 mile) route through Marlborough, Wellington, Wairarapa and Hawke's Bay. During the Rugby World Cup the Classic New Zealand Wine Trail will celebrate the best each region has to offer through a range of events and activities.*

**Key events to plan the journey around:-**

### **Marlborough**

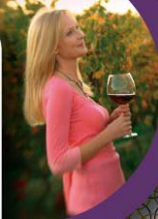
EVENT	DATE/TIME	LOCATION
<b>Cruise into Picton</b> A six week programme of daily, weekly and one-off events providing all visitors to Picton with the opportunity to enjoy genuine New Zealand warmth and hospitality.	Everyday during RWC	Picton Town and foreshore
<b>Kei Puta Te Wairau: Te Wahanga a Tangaroa - A celebration of Maori art from the Wairau (Marlborough)</b> This special exhibition will feature internationally significant taonga (artefacts) from the famous Wairau Bar archeological site with contemporary art by Marlborough Maori artists.	Weekdays 10.30am – 4.30pm, weekends 1pm – 4pm during RWC	Millennium Art Gallery
<b>Cruise into Picton for Springfest</b> A two day free event with entertainment planned to appeal to a wide variety of tastes and featuring Marlborough wine and seafood, hospitality, family activities and more.	17-18 September 2011	Picton town and foreshore
<b>Indulge Marlborough</b> Entertainment event incorporating music, cuisine, fashion and the latest vintage of Marlborough Wines.	29 - 30 September 2011	Stadium 2000
<b>Marlborough Wine and Cuisine at Brancott Vineyard</b> The perfect way to experience all of Marlborough's wines in one beautiful location. Around 50 wineries provide their own staff to serve guests; you may even be served by the winemaker themselves.	6 October 2011	Brancott Estate, Blenheim

### **Wellington**

<b>Visa Wellington On a Plate</b> DINE Wellington offers diners a tasty line up of set menu deals and dinner offers during Visa Wellington On a Plate at restaurants throughout the region.	5-21 August	Restaurants throughout the Wellington region
<b>World of Wearableart</b> International Art and Fashion show – artists and designers from New Zealand and all around the world enter garments that are presented in a unique two hour show. A montage of theatre,	August 25 - September 9	TSB Bank Arena



# CLASSIC NEW ZEALAND WINE TRAIL



*Unforgettable wine and food experiences around every corner*

dance, art, movement and colour; simply put they are unforgettable.		
<b>Oceania</b> Work from modern and contemporary Maori, Pacific Island and Pakeha artists at City Gallery Wellington's Oceania: Imagining the Pacific, and explore Pacific, Maori and European peoples' response to new technologies, materials and ideas at Te Papa's Oceania: Early Encounters.	<b>August 6 - November 6</b>	<b>Te Papa and City Gallery</b>
<b>I, George Nepia</b> I, George Nēpia is a one-man play, written by one of New Zealand's leading playwrights, Hone Kouka, about one our most loved and famous rugby icon — George Nēpia.	<b>September 8 - September 17</b>	<b>Circa Theatre</b>
<b>The Story of Ka Mate</b> Ka Mate is a Ngāti Toā taonga, composed by Te Rauparaha. The Story of Ka Mate, is an interactive exhibition where you'll learn about the haka and how to do it.	<b>August 29 – October 23</b>	<b>Museum of New Zealand Te Papa Tongarewa</b>
<b>Hard on the Heels</b> Featuring over 100 images of great All Black moments, games and players over a 60-year period, the Hard on the Heels exhibition is drawn from Peter Bush's vast library of photographs and features personal favourites.	<b>September 3 – October 30</b>	<b>Museum of City &amp; Sea</b>
<b>Gerard Gargouil</b> French caricaturist will draw portraits of the French team and the All Blacks live in the Town Hall. Works will be auctioned off for charity.	<b>September 9 – September 30</b>	<b>Wellington Town Hall</b>
<b>Tape Art at Te Papa</b> Throughout the tournament a large temporary art work will be created from tape on the side of Te Papa.	<b>During RWC</b>	<b>Museum of New Zealand Te Papa Tongarewa</b>
<b>Inside Out Productions Light and Projection Show</b> Iconic buildings on the Wellington waterfront will be transformed with light and colour every evening.	<b>Every evening during RWC</b>	<b>Wellington waterfront</b>

## **Wairarapa**

<b>Wairarapa Vintage Wings and Wine</b> Enjoy a meandering "journey" through aviation history including the world's largest privately owned collection of World War One aircraft while being treated to the very best of Wairarapa wine and food. During the afternoon you are treated to aerial displays of some of the world's rarest original World War One aircraft along with some thrilling top dressing and aerobatic displays.	<b>7 &amp; 10 October</b>	<b>Hood Aerodrome, Masterton</b>
<b>Rugby, Haka, Hāngi Festival</b> Join in the fun of the Rugby, Haka, Hāngi Festival at the Carterton Rugby Club in the Wairarapa as the locals treat visitors to a friendly game of rugby, lessons in how to do the haka and some traditional Māori food. There will be rugby matches against local club teams suitable for all skill levels. There's workshops for those new to the game and tips to improve knowledge, ability and rugby skills. As part of the festival visitors will learn a haka (war dance), share the tribal Māori culture of the	<b>9 &amp; 10 September</b>	<b>Carterton Rugby Club, Belvedere Road, Carterton</b>



# CLASSIC NEW ZEALAND WINE TRAIL



*Unforgettable wine and food experiences around every corner*

local iwi, Ngāti Kahungunu and Rangitāne and see how to prepare a traditional hangi (food cooked in the ground in a traditional Māori way) for the celebratory dinner in the evening.

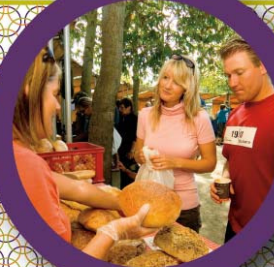
## Hawke's Bay

<p><b>Hastings Blossom Festival</b> Celebrating the arrival of spring and the wonderful Hawke's Bay produce that comes with it, the 2011 Blossom Festival Parade is also a special welcome to the French and the Canadian Rugby World Cup teams who are playing in Napier the next day. The Parade also marks the start of the Blossom Festival, nine days of food, wine and festivities followed by the Epicurious weekend with events such as the New Zealand Olive Festival and Hawke's Bay Farmers' Market in between.</p>	<p><b>Saturday 17 September</b></p>	<p><b>Central Hastings</b></p>
<p><b>New Zealand Olive Festival</b> The New Zealand Olive Festival is a day to celebrate all things olive.</p>	<p><b>24 September 10am — 4pm</b></p>	<p><b>Hawke's Bay Racecourse in Hastings</b></p>
<p><b>Central Hawke's Bay — The Festival</b> Make your way to 'Lamb Country' in the Central Hawke's Bay and the stunning Pukeora Estate for The Festival — Central Hawke's Bay, a four-day extravaganza of local arts, music, food and entertainment.</p>	<p><b>8 — 11 September 10am – 4pm daily</b></p>	<p><b>Pukeora Estate, Central Hawke's Bay</b></p>
<p><b>Deco Party @ The Sound Shell</b> On Rugby World Cup match days, Napier's iconic 1932 Sound Shell will be transformed into a fabulous Art Deco themed party.</p>	<p><b>18 September &amp; 27 September</b></p>	<p><b>Sound Shell, Marine Parade Napier</b></p>
<p><b>Fan Zones: Napier, Hastings, Wairoa and Waipukurau</b> This is a great opportunity for visitors to NZ and locals to gather together in a family friendly environment and watch the Rugby World Cup 2011 semi-finals on October 15th and 16th, and the Grand Final on October 23rd. Entry to the fan zone will be free - and the match will be preceded by some top quality entertainment that will really get you into the mood for this huge community celebration.</p>	<p><b>October 15th and 16th, October 23rd</b></p>	<p><b>Local theatres and cinemas</b></p>

*For more information about events along the Classic New Zealand Wine Trail during RWC, take a look at:-*  
<http://www.nz2011.govt.nz/experiencerealnz/>



CLASSIC  
NEW ZEALAND  
**WINE  
TRAIL**



*Unforgettable wine and food experiences around every corner*